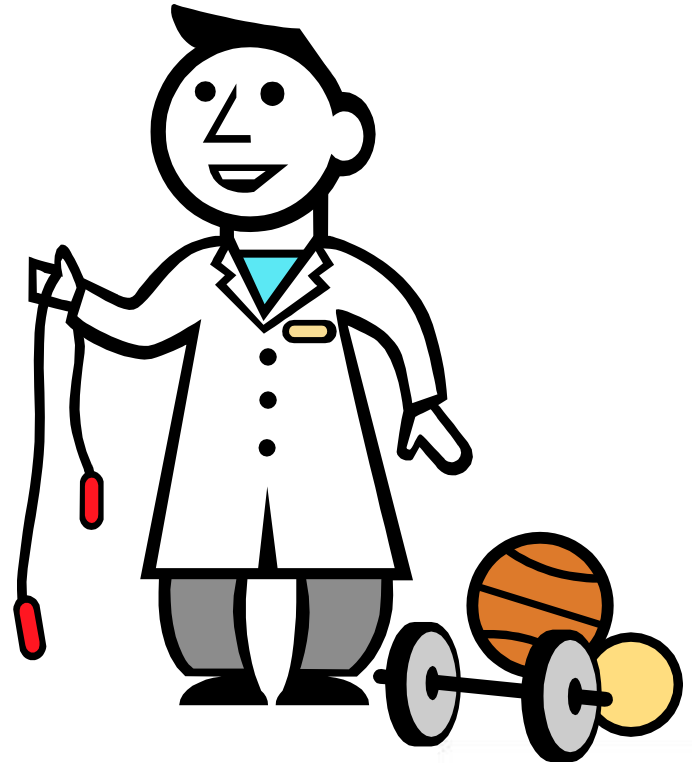


Bona[®]
Sportive
System



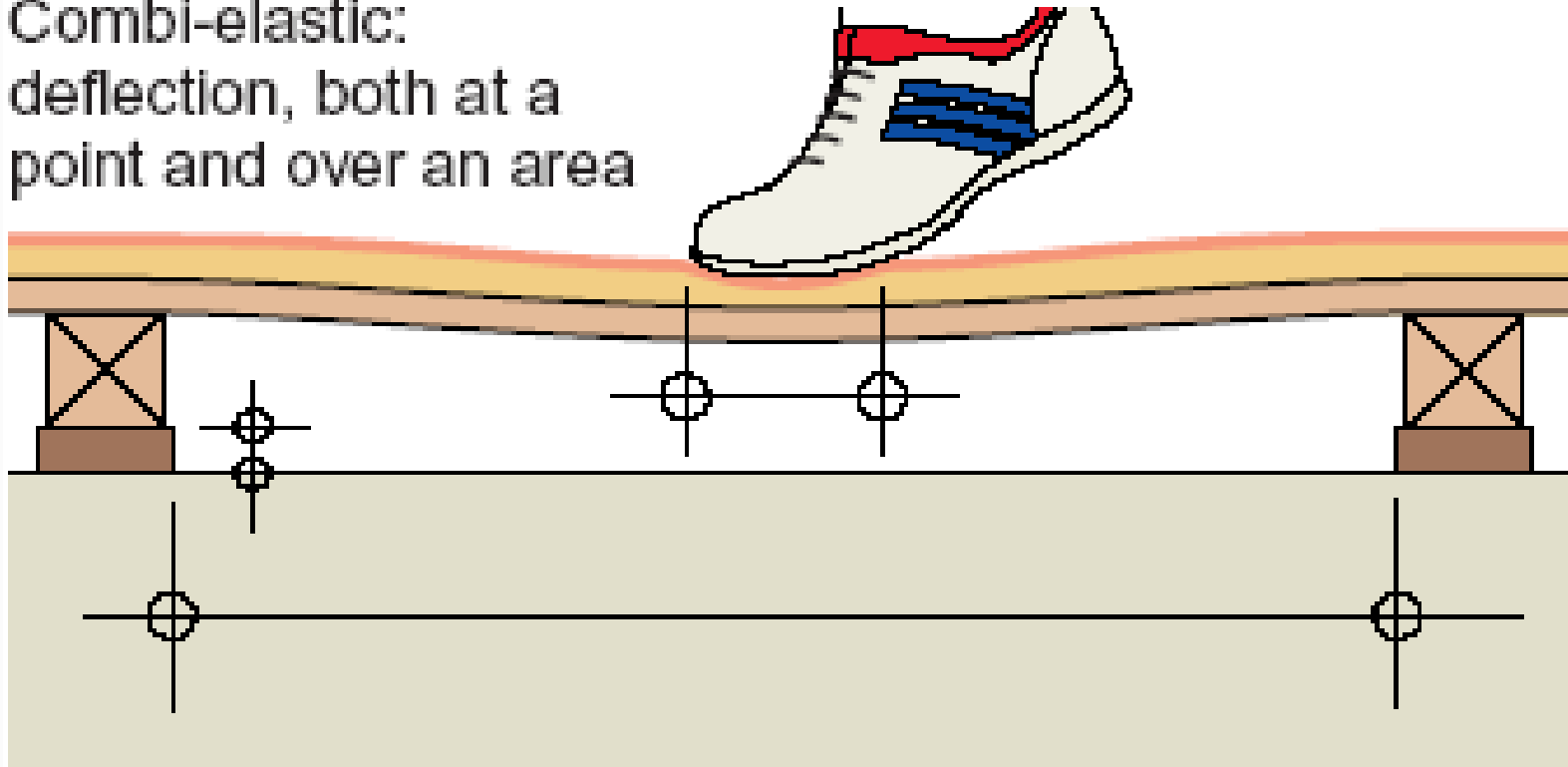
Sports floors offer many challenges

- Movement
- Heavy use
- Large area
- Contamination
- Mix of materials
- Frequent heavy cleaning
- Demands on slip resistance
- Demands on sheen level



Floor movement

Combi-elastic:
deflection, both at a
point and over an area











Bona[®] **Sportive** System



Working with the Bona Sportive System

1. Sand the floor to bare wood



**8700 Ceramic
Abrasives**



Working with the Bona Sportive System

1. Sand the floor to bare wood.
2. **Apply one coat of Sportive Primer**



Long open time

Even colouration

Easy to abrade



Working with the Bona Sportive System

1. Sand the floor to bare wood.
2. Apply one coat of Sportive Primer
3. **Apply one coat of Sportive Finish**



2K Oil-modified
urethane

Excellent adhesion

Safe hardening system



EN 14904:2006 The European standard for sport

- Friction
- Shock absorption
- Vertical deformation
- Vertical ball behaviour
- Resistance to rolling load
- Reaction to fire
- Formaldehyde emission

- Wear resistance
- Content of pentachlorophenol (PCP)
- Specular reflectance
- Specular gloss
- Resistance to indentation
- Resistance to impact
- Degree of evenness
- Marking and labelling



Working with the Bona Sportive System

1. Sand the floor to bare wood.
 2. Apply one coat of Sportive Primer
 3. Apply one coat of Sportive Finish
 4. **Intermediate sanding, grit 150**
-



Working with the Bona Sportive System

1. Sand the floor to bare wood.
2. Apply one coat of Sportive Primer
3. Apply one coat of Sportive Finish
4. Intermediate sanding, grit 150
5. **Apply Sportive Paint or colour selfadhesive tapes**



Quick drying

Excellent adhesion

Requires no sanding



Which colour to which sport?

	Sweden	Germany	England
Badminton	Black or light green	Green	White
Basketball (comp)	Red	Black	Black
Basketball (training)	Brown	-	-
Handball	Yellow	Orange	Other
Indoor hockey	Orange	Orange	Light blue
Tennis	White	White	Yellow
Volleyball (comp)	Light blue	Blue	Green
Volleyball (training)	Blue	-	-



Product Bona Sportive paint 1,8l	linear metres per litre by 5 cm wide 160	linear metres per litre by 4 cm wide 200	X square metres per litre 8
--	--	--	---------------------------------------

Sport	Colour	Linear metres
Badminton	White	100
Basketball	Black	211
Netball	Red	155
Tennis	Yellow	146
Volleyball	Green or other	83
5 a-side Football	Not specified	50
Hockey	Dark Blue (indoor version L. Blue)	90
Korfball	Not specified	140
Handball	Not specified	180

Note: Fill in only the blue cells



Sport	Number of courts	Total linear metres	Litres of paint, one coat (1 litre per 8 sqm)	2 coat application (1 litre per 10 sqm)
Badminton (4 cm wide)	5	500	3,125	5
Basketball	1	211	1,31875	2,11
Football	2	100	0,625	1
Handball	1	180	1,125	1,8
Hockey	2	180	1,125	1,8
Korfball	1	140	0,875	1,4

Note:

The British Standard prescribes to use the colours as detailed above for these specific sports but there are no German or European standards regulating which colour to use. As prescribed by federations such as FIBA, IHF & FIVB most important is that the line is in contrast to the floor and other crossing lines. By tradition certain sports are painted with a certain colour which may vary between countries.

The consumption rate above is calculated without concern to potential spillage and absorption in brushes/rollers. Always round off upwards.

Colours such as white, yellow, orange and light blue require higher application rate than the other colours or two thin applications.

Kvadre 56,84m²
 Kruh 9,61m²
 Polkruh spolu 9,61m²
 76,1m² =6ks farby
 Okraj



Working with the Bona Sportive System

1. Sand the floor to bare wood.
2. Apply one coat of Sportive Primer
3. Apply one coat of Sportive Finish
4. Intermediate sanding, grit 150
5. Apply Sportive Paint
6. **Apply one coat of Sportive Finish**



2K Oil-modified
urethane

Excellent adhesion

Safe hardening system



Working with the Bona Sportive System

1. Sand the floor to bare wood.
2. Apply one coat of Sportive Primer
3. Apply one coat of Sportive Finish
4. Intermediate sanding, grit 150
5. Apply Sportive Paint
6. Apply one coat of Sportive Finish
7. **Maintenance with Sportive Cleaner/ Cleaner Plus**

Fast and efficient

Safe on wood

Restores friction to floor



Working with the Bona Sportive System

1. Sand the floor to bare wood.
2. Apply one coat of Sportive Primer
3. Apply one coat of Sportive Finish
4. Intermediate sanding, grit 150
5. Apply Sportive Paint
6. Apply one coat of Sportive Finish
7. Maintenance with Sportive Cleaner/
Cleaner Plus
8. **When needed, light sanding +
one additional coat of Sportive
Finish**

2K Oil-modified
urethane

Excellent adhesion

Safe hardening system



Common mistakes in Sports Halls

...and how to avoid them



Cleaning too ag







Not pressing down lining tape well



Press the tape firmly to the floor!



Not keeping c
con



Moisture content of wood (% wt)

		Temperature in °C				
		10	15	20	25	30
% Relative Air humidity	80	16,2	16,0	16,0	15,8	15,5
	75	14,7	14,5	14,3	14,0	13,9
	70	13,2	13,1	13,0	12,8	12,4
	65	12,0	12,0	11,8	11,5	11,2
	60	11,0	10,9	10,8	10,5	10,3
	55	10,1	10,0	9,9	9,7	9,4
	50	9,4	9,2	9,0	8,9	8,6
	45	8,6	8,4	8,3	8,1	7,9
	40	7,8	7,7	7,5	7,3	7,0
	35	7,0	6,9	6,7	6,4	6,2
	30	6,2	6,1	5,9	5,6	5,3
25	5,4	5,3	5,0	4,8	4,5	

Example: 60 % relative Air humidity, 15 °C => 10,9 % Moisture content in the wood

<http://www.wunderground.com/history/>



Common wood species – physical data

Wood species	Density - Air dried (g/cm ³)	Avg. dimensional change in % per %	Form-stability	Speed of water absorption
Maple (European)	0,61 ... 0,66	0,21	medium	Medium / quick
Beech (Red)	0,70 ... 0,79	0,31	poor	Medium / quick
Oak	0,65 ... 0,76	0,25	medium	slow
Ash	0,68 ... 0,76	0,28	medium	Slow / medium
Afrormosia	0,70 ... 0,80	0,25	good	Slow, very slow
Wenge	0,81 ... 0,89	0,27	medium	Very slow

Original moisture quote: 9%

Measured moisture quote: 4%

Difference = 5%-units

Difference% x dimensional change factor = A

Original width of floor / A = Current size of floor

Ex. $5 \times 0,31 = 1,55\%$

$30 / 1,0155 = 29,54$ metres

$30 - 29,54 = 0,46$ metres



Moisture reader wood



- Rozmery ihrísk sú dostupné na stránkach športových asociácií.
- Certifikáty
- Film Čiarovanie
- Foto údržba





END